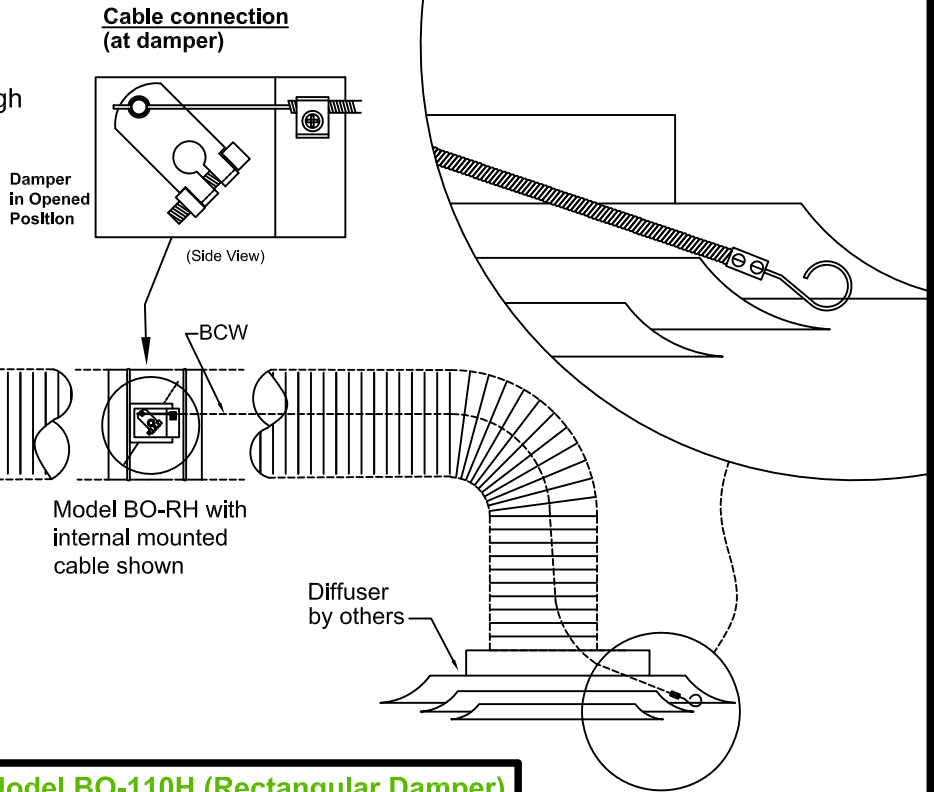
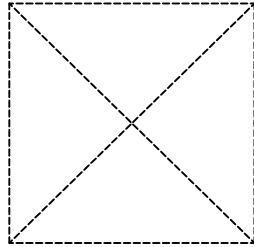
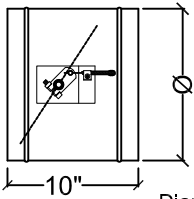


**Application/Design:**

The Diffuser/Grille Balancing Bowden Cable System was developed for air balancing through the face of a diffuser with simple push-pull adjustments at a looped cable end.



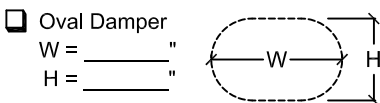
**Model BO-RH (Round Damper)**



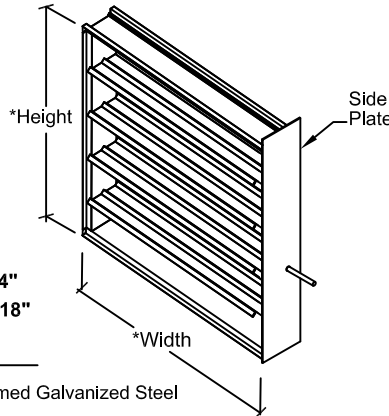
**Features:** Diameter 10"

- Frame:** 24 ga galvanized steel (4" -10"Ø)
- Frame:** 20 ga galvanized steel (12" -20" Ø)
- Blade:** 24 ga galvanized steel (4" -10"Ø)
- Blade:** 20 ga galvanized steel (12"-20"Ø)
- Bearings:** Nylon 6/6 molded synthetic
- Axles:** Zinc Plated Steel pins

- Options:**
- Aluminum Construction
  - Stainless Steel Construction
    - 304 stainless
    - 316 stainless
  - Cable mount location
    - Internal (in duct)
    - External



**Model BO-110H (Rectangular Damper)**



\*Undersized 1/4"  
 Max Size: 24"x18"

- Features:**
- Frame:** Rollformed Galvanized Steel
  - Blade:** 4"-7" wide, 16ga. Galvanized Steel
  - Bearings:** Nylon 6/6 molded synthetic
  - Axles:** 3/8" square plated steel  
 \*No jamb seals\*
  - Side Plate:** 6-1/4" x (ht. +1") x 18 ga galv. steel

- Options:**
- Cable mount location
    - Internal (in duct)
    - External

**RECOMMENDED SPECIFICATIONS**

- A. Remote control system shall provide means of balancing airflow in ductwork through grilles or diffusers
- B. The contractor shall install damper in ductwork and run cable through the grille or diffuser.
- C. The Diffuser/Grille Balancing Bowden Cable System shall be manufactured by United Energetech Corporation.

BCW - Bowden Control Wire  
 (All 303 Stainless Steel)

Due to continuing research, United Energetech reserves the right to change specifications without notice.

Job Name:	DRAWN BY:	DATE:	REV. DATE:
Location:	CLJ	4-20-12	8-22-12
Architect:	REV. NO.	APPROVED BY:	DWG. NO.:
Engineer:	1		E-14a
Contractor:			